



Industrie-Elektronik

QUALITY MAKES THE DIFFERENCE



ECOFIT



24 months warranty
on all modules
within the scope of the ECOFIT-project.

The advantages BVS has to offer:

- Low costs**
Only about 10 % of a retrofit
- No retraining** on a new control system is necessary
- Longer machine availability & extended service life** thanks to overhauled industrial electronic modules as well as evaluation and safeguarding of service capability as part of the ECOFIT
- Full compliance with the Machinery Directive** according to 2006/42/EG
- On-site service**
Data back-up, disassembly, installation and recommissioning
- Preservation of your inventory**
Continue using your existing warehouse
- Time needed (approx.)**
Retrofit: 1-4 months/
ECOFIT: 1-2 days (for exchange)/7-10 days (for general overhauls)

ECOFIT – Electronic general overhaul of machines as a cost-effective alternative to retrofitting

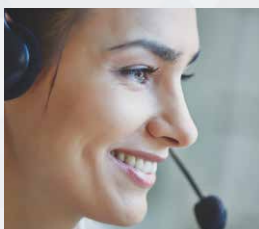
Keep your machines in the running

Schedule a pit stop in good time to maintain the functionality of your machines before expensive and lengthy downtimes occur. Maintenance instead of repair as “there’s still life in the old dog” (provided that the functional requirements of your machine remain unchanged).

With more than **30 years’ experience** in product overhaul and repair of electronic components in automation technology (e.g. control systems, drives, HMI, PLC, ... to name but a few), we at BVS have been offering a unique service with great success for many years. This unique service is an **efficient and effective alternative to conventional retrofitting** of the complete machine electronics.

With our ECOFIT service, we provide you with a **fast** and especially **cost-effective** way of completely overhauling your industrial electronics in machines and systems **as a preventive measure within the scope of scheduled machine downtime** and thereby safeguard your **machine availability** in the long term.

*Provided that the functional requirements of your machine remain unchanged.

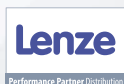


We are available to answer your questions around the clock.

24/7 Hotline: +49 6181 95404-200

Fax: +49 6181 95404-5

E-mail: service@bvs-cnc.com



BVS Industrie-Elektronik GmbH

Repair | Sales | Service – Electronics for CNC, PLC & ROBOTS and renewable energies

Margarete-von-Wrangell-Straße 18 • 63457 Hanau • Germany

*Please see our terms and conditions for warranty details.

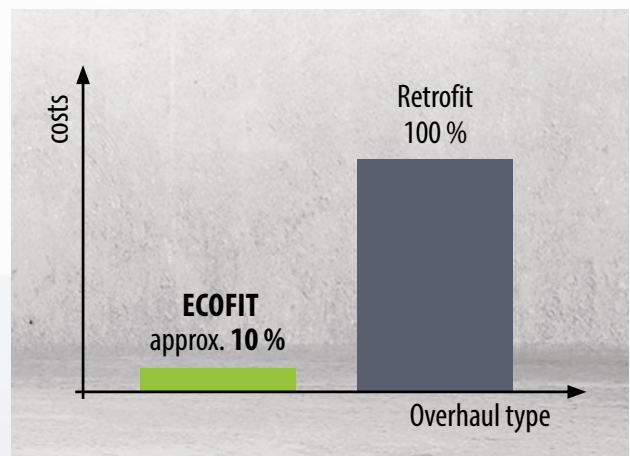
www.bvs-cnc.com

ECOFIT thus provides you with **economical** and **eco-friendly** advantages for maintaining the availability of your machine.

Economic advantages



- ✓ Low costs and short modification time compared to retrofitting
- ✓ Overhaul at full capacity possible
- ✓ No retraining on a new control system is necessary
- ✓ **Longer machine availability & extended service life** thanks to overhauled industrial electronic modules as well as evaluation and safeguarding of service capability as part of the ECOFIT
- ✓ 24-month warranty*

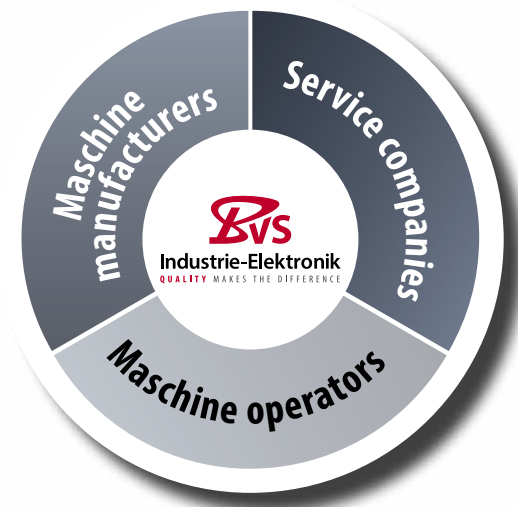


Ecological advantages



- ✓ Full compliance with the Machinery Directive as per 2006/42/EC
- ✓ Preservation of your inventory

Who has a keen interest in ECOFIT?



Flexibility in the interest of both the customer and the project!

All services included in the ECOFIT package can be customised according to your needs and the respective project requirements.

Overview of basic project setup options

Analysis of the industrial electronics modules by the customer and/or BVS

Repair process

- Disassembly of the industrial electronics on-site within the scope of scheduled downtime for the respective machine
- General overhaul and repair carried out at BVS
- Installation and commissioning carried out by maintenance engineers/service technicians of the customer

With our on-site service: Disassembly, installation and commissioning carried out by maintenance engineers/service technicians of BVS or a BVS partner

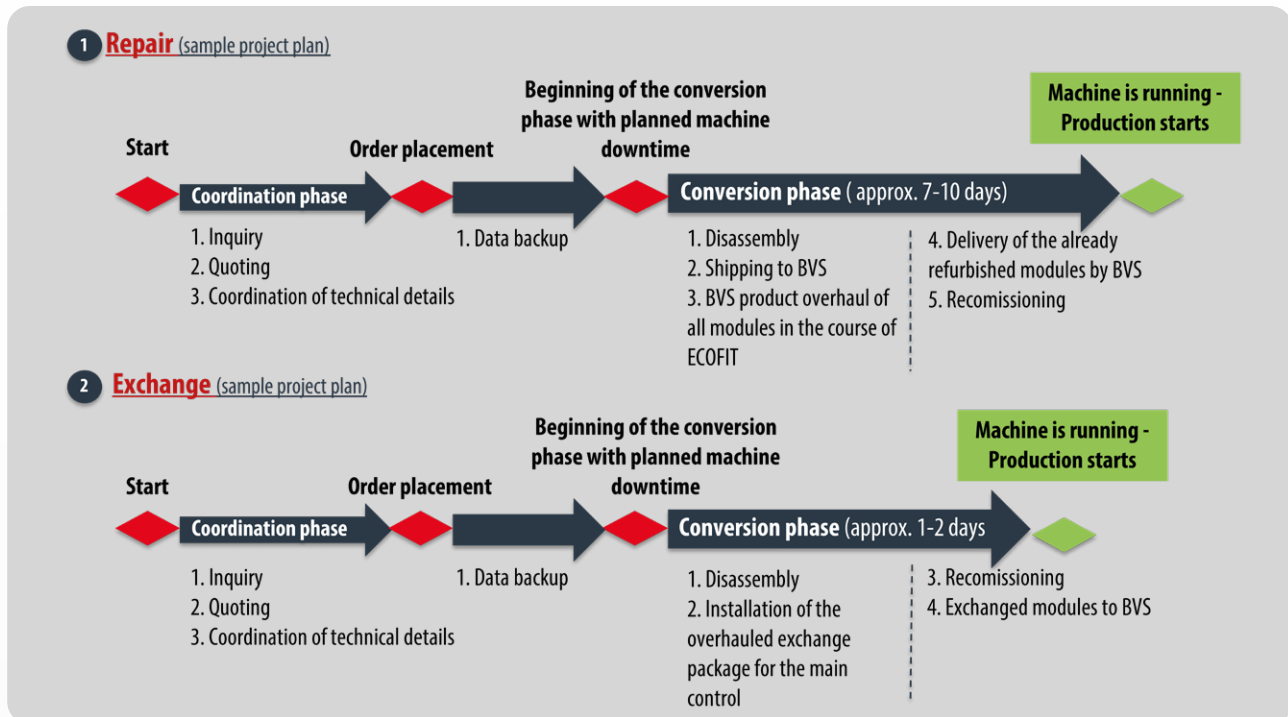
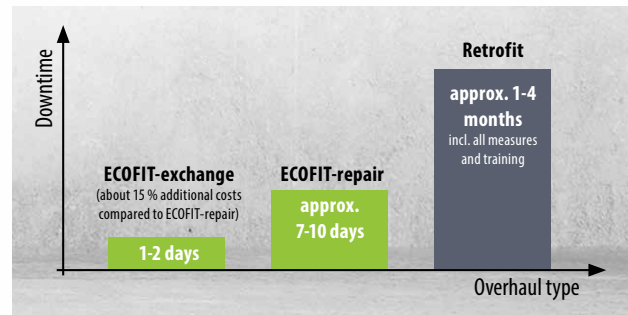
Exchange process

- Direct exchange of the industrial electronics on-site and installation of already overhauled modules on the respective machine
- Disassembly, installation and commissioning carried out by maintenance engineers/service technicians of the customer
- Old modules sent to BVS

With our on-site service: Disassembly, installation and commissioning carried out by maintenance engineers/ service technicians of BVS or a BVS partner

What does the ideal sequence of an ECOFIT project actually look like?

Irrespective of the specific project setup you opt for, an ECOFIT can be carried out in the repair or exchange process. In contrast to a traditional retrofit, this saves you lots of time and money. The requisite machine downtime is kept to a minimum.



The results speak for themselves! A customer example from the field.

Why was the system to be given an ECOFIT?

1. The system will be used to process similar, long-term customer orders over the next few years, which is why the old control system can still be used on a long-term basis. There is therefore no need for a significantly more expensive retrofit.
2. Due to the machine's long service time (>15 years), unscheduled electronic failures became more frequent.
3. In order to prevent such cost-intensive machine downtimes, a scheduled maintenance window of 1-2 weeks was used to overhaul the complete control system as part of an ECOFIT.
4. In the past, such measures had already been carried out successfully with other machine suppliers of the customer.

The specific approach:

A complete ECOFIT of the machine electronics was realised in the repair process. At the same time, a mechanical product overhaul was carried out by the machine manufacturer. Disassembly and installation of the modules and recommissioning of the machine were carried out by the customer's maintenance engineers.

The result:

Demonstrably greater machine availability!

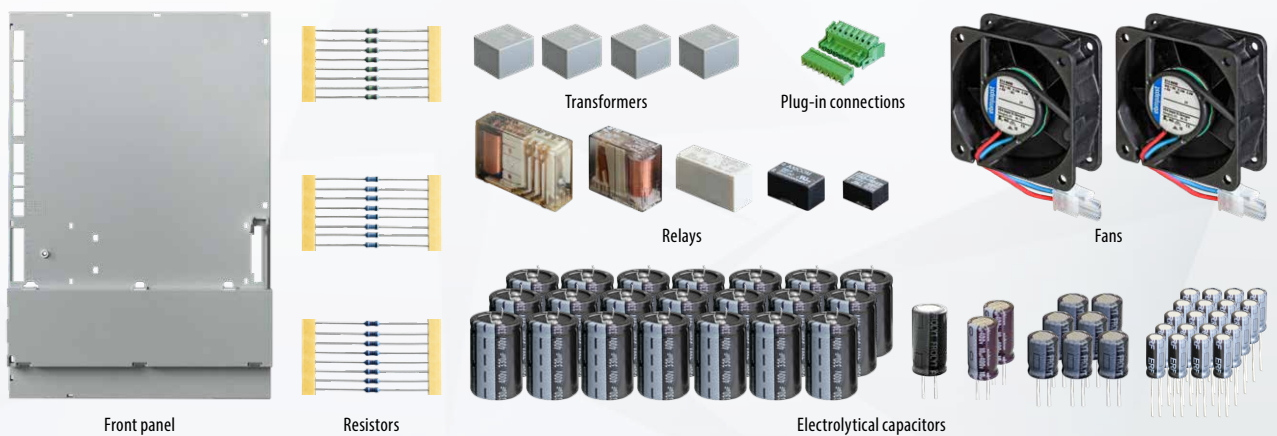
Product overhaul repair package for a SIMODRIVE E/R module

In both the repair and the exchange process, our ECOFIT general overhaul service can take care of your machine's entire

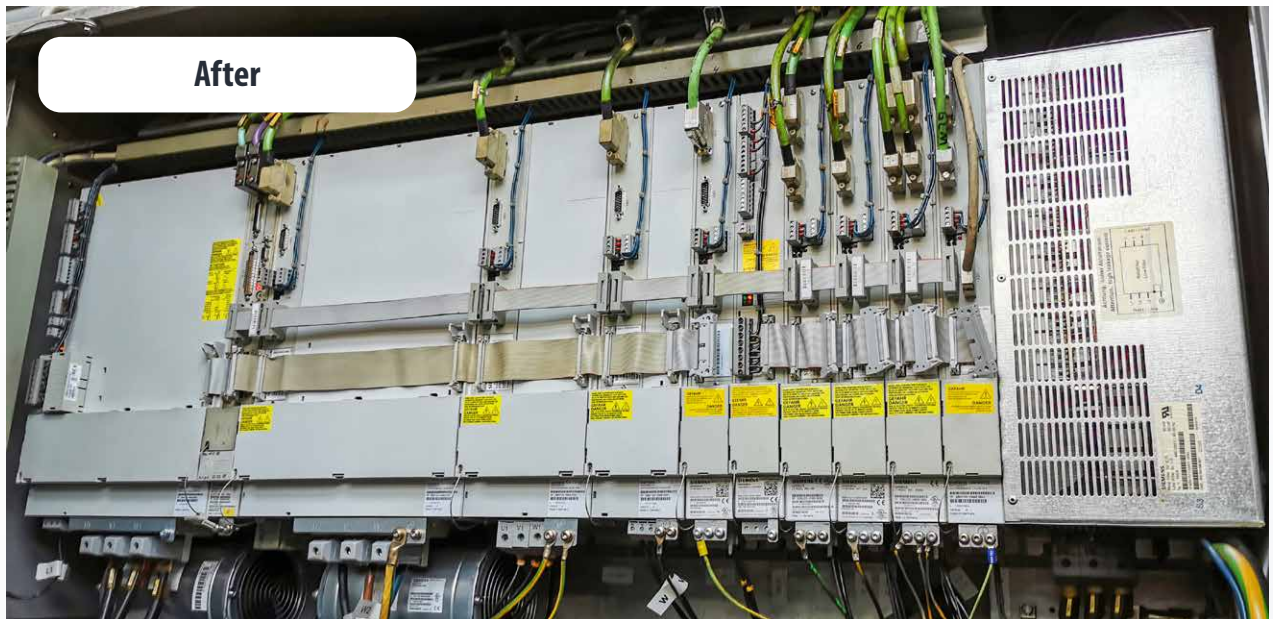
control and drive electronics. Guaranteed BVS quality included!



For all repairs, we use defined overhaul packages, such as the Siemens SIMODRIVE E/R module 6SN1145 shown here as an example.



Take a look at our customer projects for yourself –
A picture paints a thousand words



Keep your machines in the running
and plan your next **ECOFIT pit stop** with us!